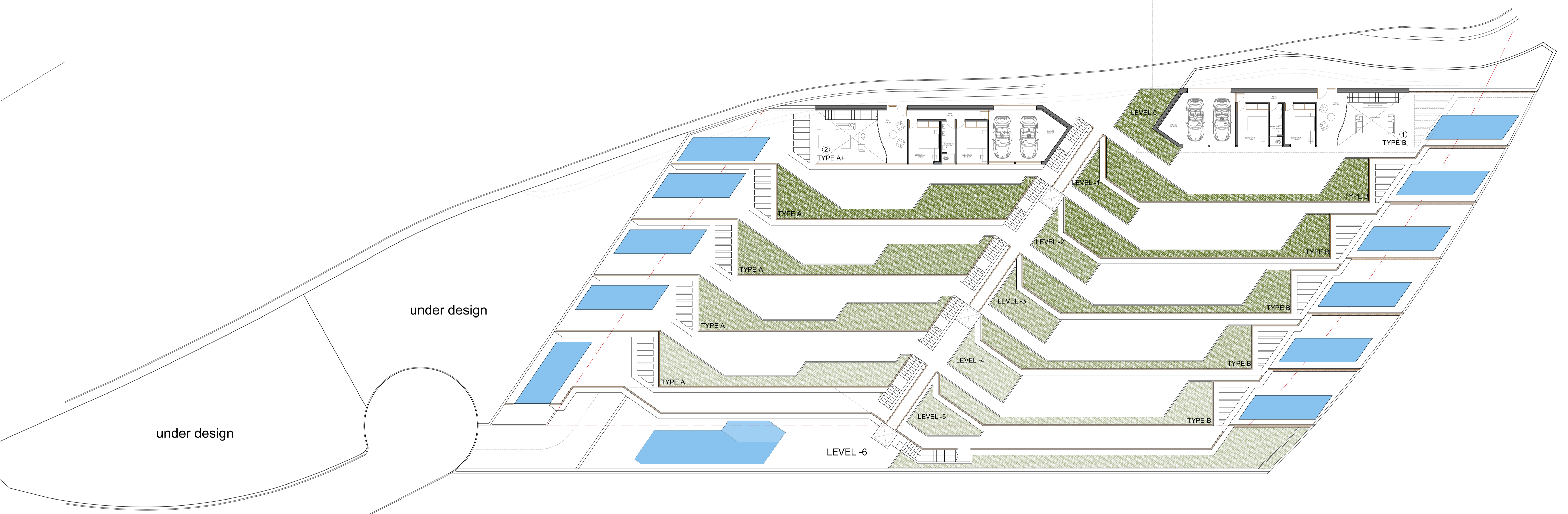
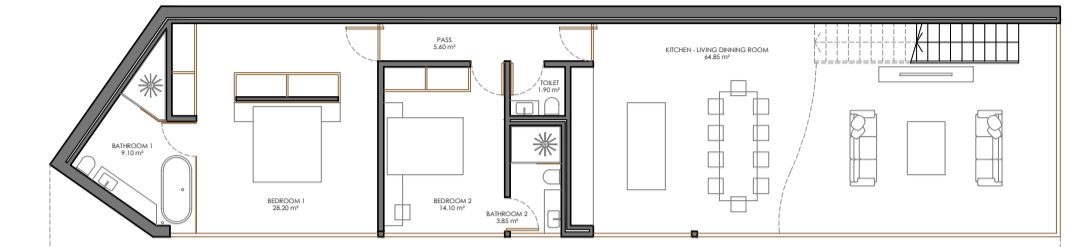
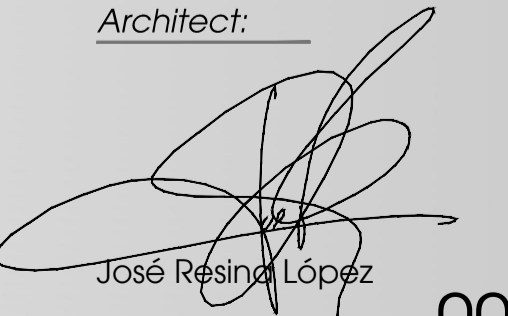


# GENERAL PLOT - LEVEL 0



HOUSE	TIPOLOGY	BOX SURFACE	TERRACE SURFACE	PRIVATE AREAS	TOTAL AREAS	POOL SURFACE
1	B+	266,90 m <sup>2</sup>	94,00 m <sup>2</sup>	43,90 m <sup>2</sup>	137,90 m <sup>2</sup>	20,00 m <sup>2</sup>
2	A+	267,50 m <sup>2</sup>	76,65 m <sup>2</sup>	48,30 m <sup>2</sup>	124,95 m <sup>2</sup>	20,00 m <sup>2</sup>
3	B	143,50 m <sup>2</sup>	95,30 m <sup>2</sup>	48,85 m <sup>2</sup>	144,15 m <sup>2</sup>	20,00 m <sup>2</sup>
4	A	143,70 m <sup>2</sup>	80,40 m <sup>2</sup>	51,95 m <sup>2</sup>	132,35 m <sup>2</sup>	20,00 m <sup>2</sup>
5	B	143,50 m <sup>2</sup>	96,25 m <sup>2</sup>	52,00 m <sup>2</sup>	148,25 m <sup>2</sup>	20,00 m <sup>2</sup>
6	A	143,70 m <sup>2</sup>	84,00 m <sup>2</sup>	51,50 m <sup>2</sup>	135,50 m <sup>2</sup>	20,00 m <sup>2</sup>
7	B	143,50 m <sup>2</sup>	96,95 m <sup>2</sup>	53,30 m <sup>2</sup>	149,95 m <sup>2</sup>	20,00 m <sup>2</sup>
8	A	143,70 m <sup>2</sup>	87,60 m <sup>2</sup>	51,00 m <sup>2</sup>	135,60 m <sup>2</sup>	20,00 m <sup>2</sup>
9	B	143,50 m <sup>2</sup>	97,35 m <sup>2</sup>	52,50 m <sup>2</sup>	149,85 m <sup>2</sup>	20,00 m <sup>2</sup>
10	A	143,70 m <sup>2</sup>	63,40 m <sup>2</sup>	64,15 m <sup>2</sup>	127,55 m <sup>2</sup>	23,60 m <sup>2</sup>
11	B	143,50 m <sup>2</sup>	63,20 m <sup>2</sup>	49,95 m <sup>2</sup>	113,15 m <sup>2</sup>	20,00 m <sup>2</sup>

Pre-project: For the construction of 11 semi detached houses + 2 villas  
 Situation: PD MASCAR-TOIX SUP. 2(D) Calpe (Alicante).  
 Promoter: MASCARAT DEVELOPMENT S.R.O.  
 Plan: GENERAL PLOT - LEVEL 0  
 Scale: 1/200 Date: 10/2020

Architect:   
 José Resina López  
 Number: 00