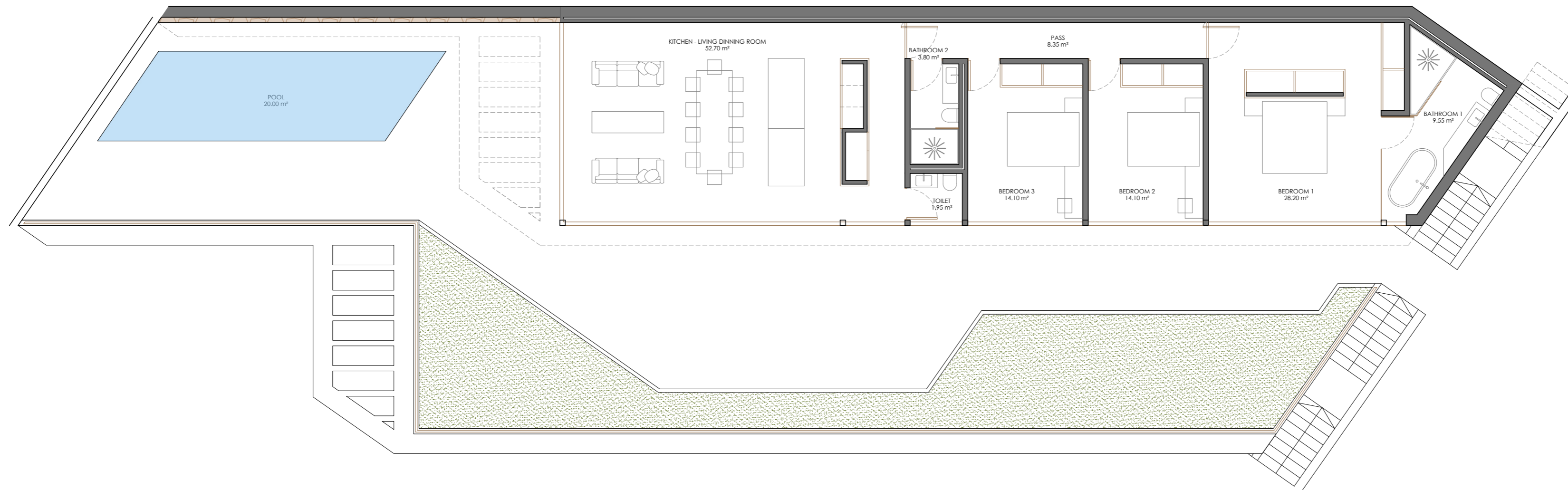


TYPE A - LEVEL 0

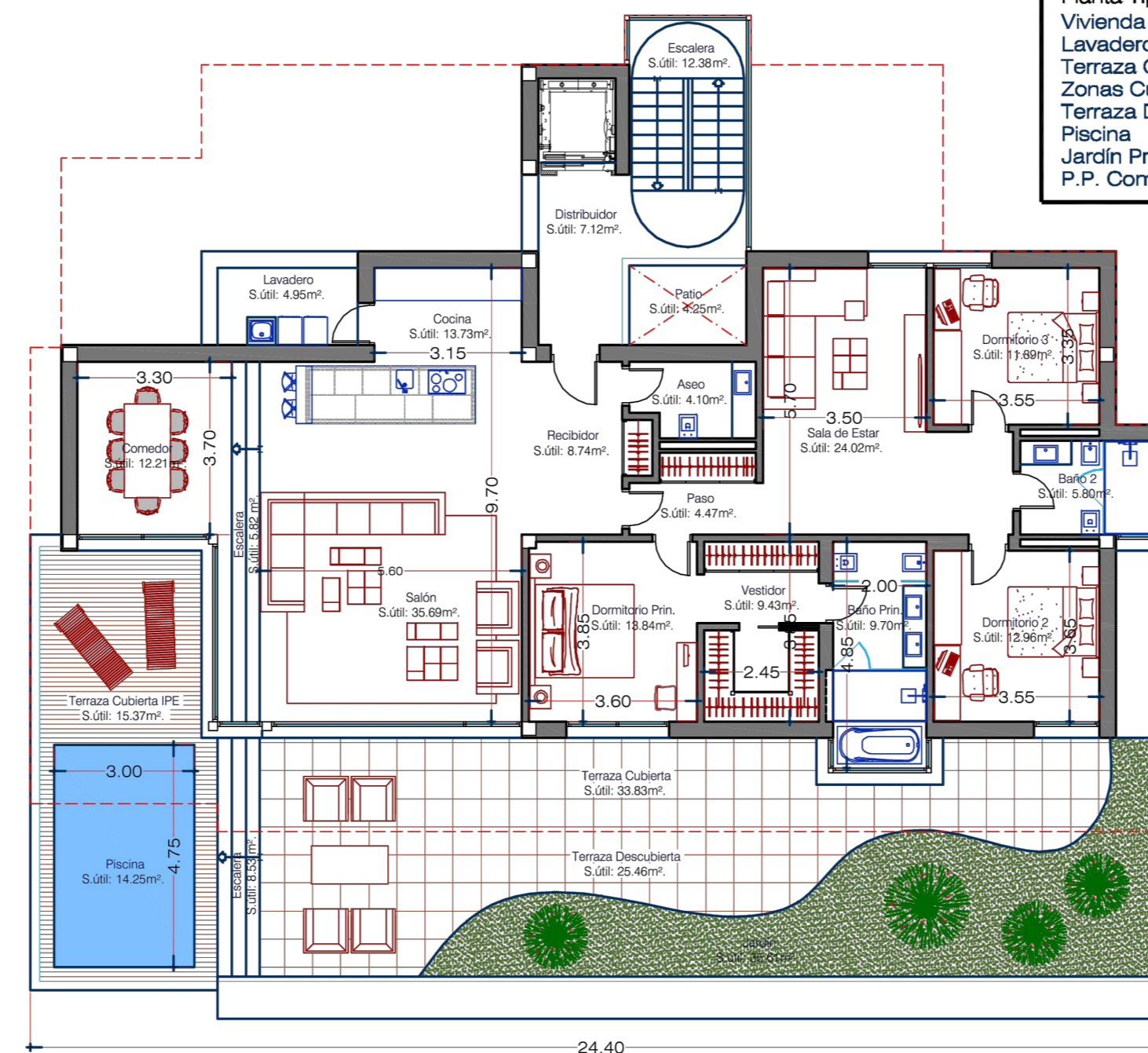


TYPE A

PER HOUSE	
BOX CONSTRUCTED SURFACES (m²)	
CLOSED LEVEL 0 (INNER SURFACE)	143.70
COVERED TERRACE (100%)	-
TOTAL CONSTRUCTED	143.70



OTHER SIMILAR PROJECTS IN THIS AREA



Cuadro de Superficies Construidas

Planta Tipo	
Vivienda Cerrada	206.39 m²
Lavadero	6.70 m²
Terraza Cubierta	63.33 m²
Zonas Cubiertas Posteriores	78.50 m²
Terraza Descubierta	52.96 m²
Piscina	14.25 m²
Jardín Privado	35.61 m²
P.P. Comunes	43.30 m²

Pre-project: For the construction of 12 semi detached houses.
 Situation: PD MASCAR-TOIX SUP. 2(D) Calpe (Alicante).
 Promoter: MASCARAT DEVELOPMENT S.R.O.
 Plan: HOUSE TYPE A
 Scale: 1/100 Date: 10/2020

Architect:

Jose Resina Lopez
 José Resina López
 Number: 00