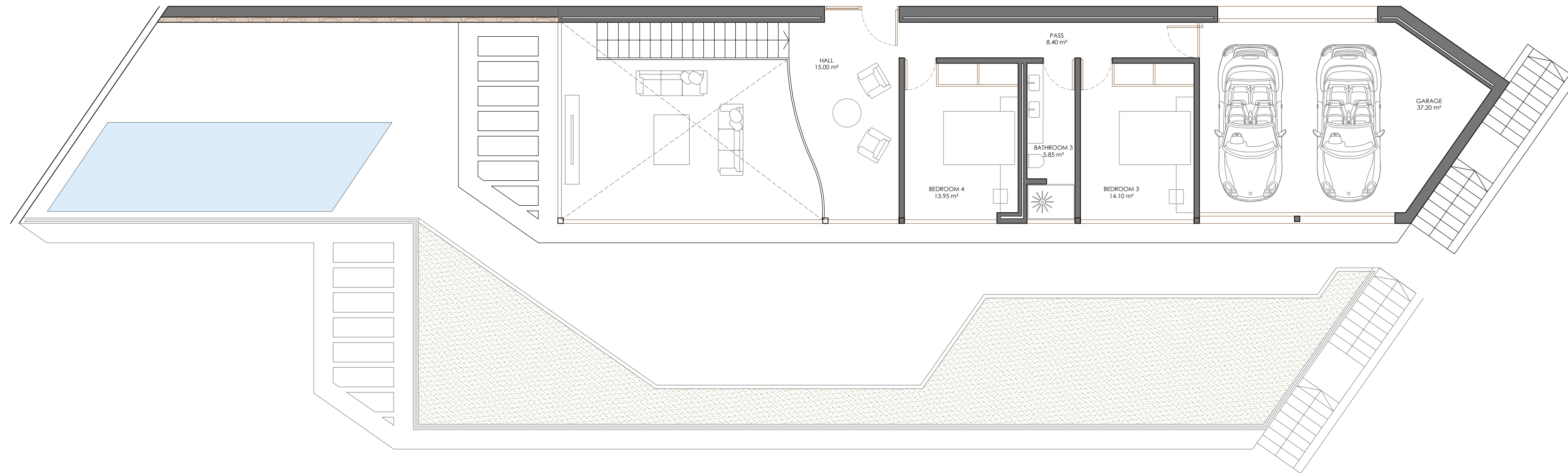


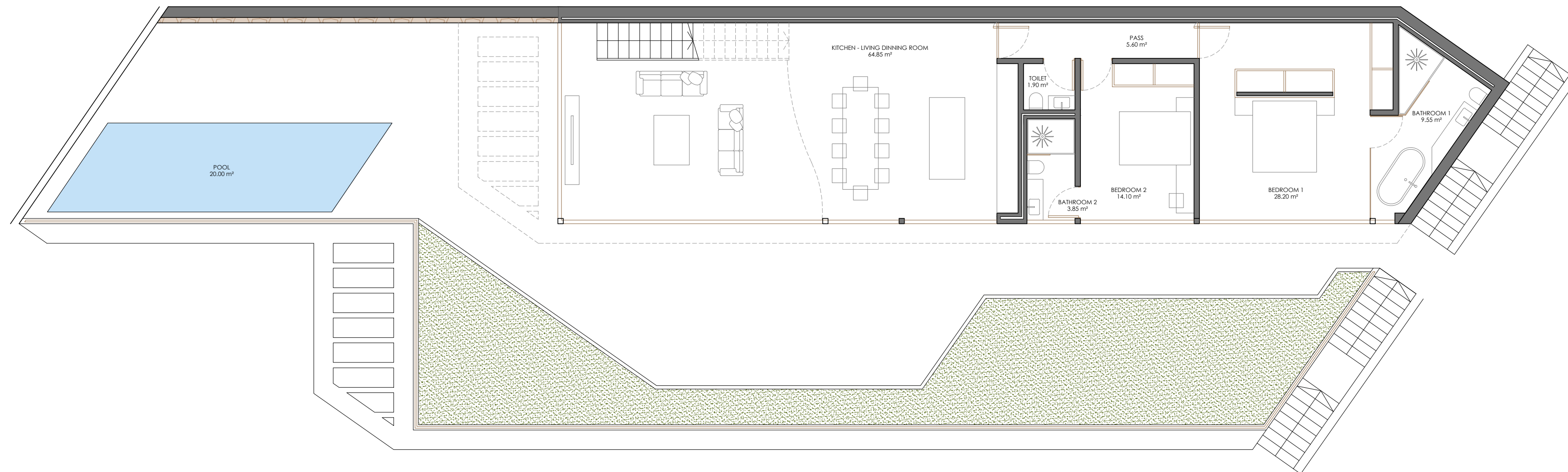
**TYPE A+ - LEVEL 1**



**LEVEL 1 - TYPE A+**

PER HOUSE	
BOX CONSTRUCTED SURFACES ( m² )	112.95
CLOSED LEVEL 0 (INNER SURFACE)	112.95
COVERED TERRACE (100%)	-
<b>TOTAL CONSTRUCTED</b>	<b>112.95</b>


**TYPE A+ - LEVEL 0**



**LEVEL 0 - TYPE A+**

PER HOUSE	
BOX CONSTRUCTED SURFACES ( m² )	154.55
CLOSED LEVEL 0 (INNER SURFACE)	154.55
COVERED TERRACE (100%)	-
<b>TOTAL CONSTRUCTED</b>	<b>154.55</b>

Pre-project: For the construction of 12 semi detached houses.  
 Situation: PD MASCAR-TOIX SUP. 2(D) Calpe (Alicante).  
 Promoter: MASCARAT DEVELOPMENT S.R.O.  
 Plan: HOUSE TYPE A+  
 Scale: 1/100 Date: 10/2020

Architect:   
 José Resina López  
 Number: 00